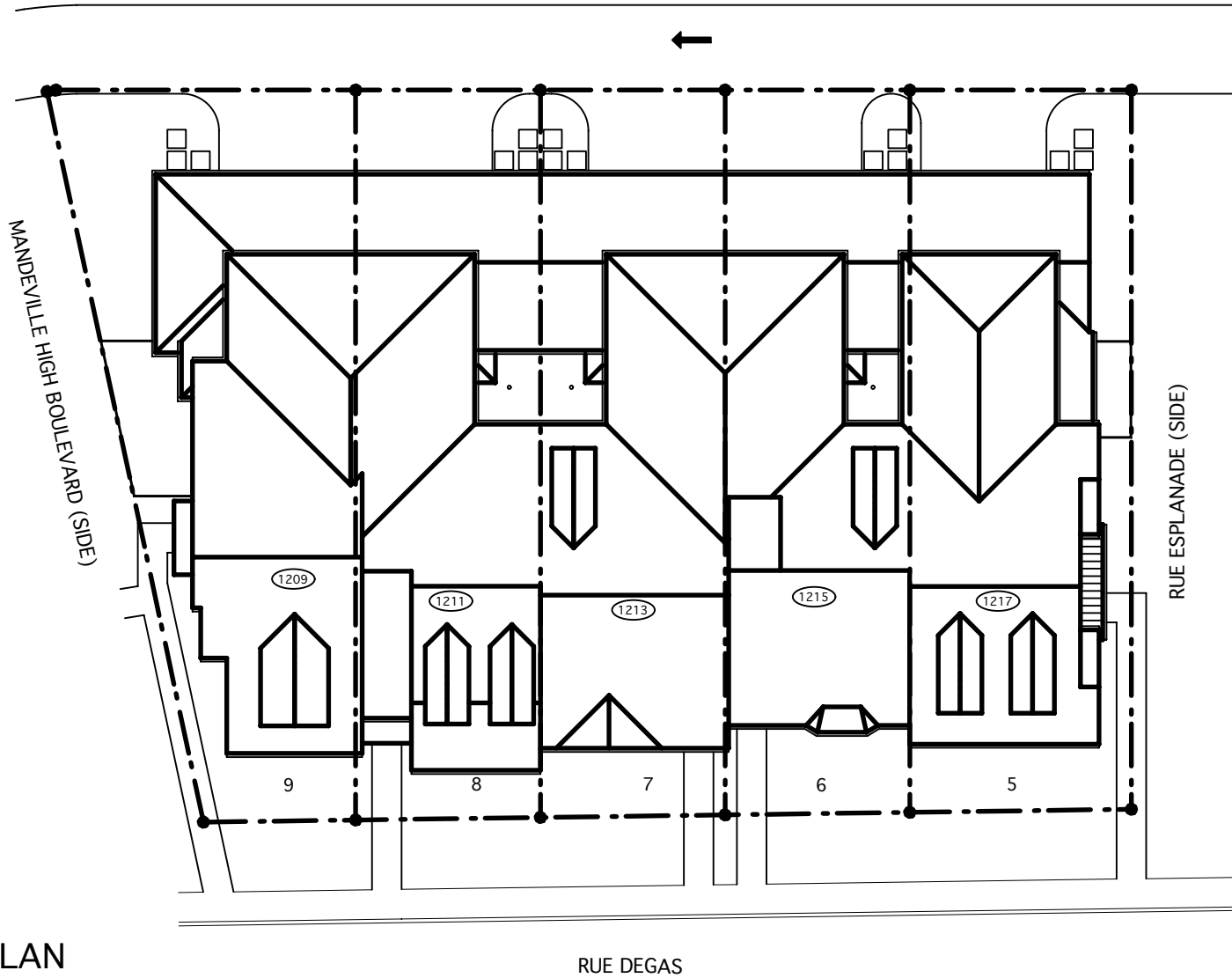


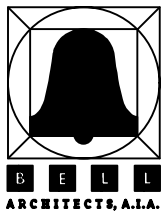
WEST CAUSEWAY APPROACH (SIDE)



SITE PLAN

LAKESIDE VILLAGE TOWNHOMES

LOTS 5 - 9
MANDEVILLE, LA



755 CAMP STREET
NEW ORLEANS
LOUISIANA
70130

PHONE:
(504) 596-2355
FAX:
(504) 596-2356

DATE: 05-27-05



LOT #9

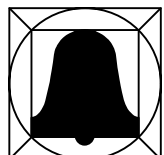
LOT #8

LOT #7

LOT #6

LOT #5

FRONT ELEVATION



B E L L
ARCHITECTS, A.I.A.

755 CAMP STREET
NEW ORLEANS
LOUISIANA
70130

PHONE:
(504) 596-2355
FAX:
(504) 596-2356

LAKESIDE VILLAGE TOWNHOMES

LOTS 5 - 9
MANDEVILLE, LA

DATE: 05-27-05



LOT #5

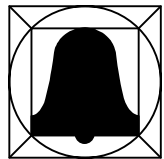
LOT #6

LOT #7

LOT #8

LOT #9

REAR ELEVATION



B E L L
ARCHITECTS, A.I.A.

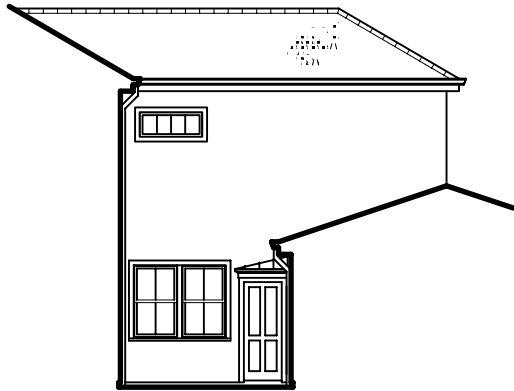
755 CAMP STREET
NEW ORLEANS
LOUISIANA
70130

PHONE:
(504) 596-2355
FAX:
(504) 596-2356

LAKESIDE VILLAGE TOWNHOMES

LOTS 5 - 9
MANDEVILLE, LA

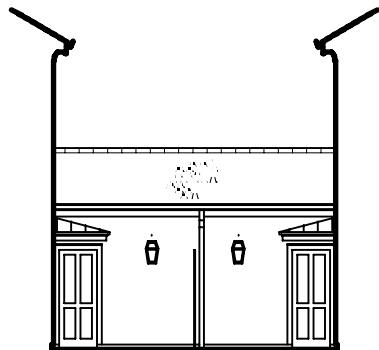
DATE: 05-27-05



TYPICAL SIDE ELEVATION @
COURTYARD



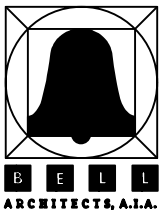
LOT #5 SIDE ELEVATION



TYPICAL FRONT ELEVATION @
COURTYARD



LOT #9 SIDE ELEVATION



755 CAMP STREET
NEW ORLEANS
LOUISIANA
70130

PHONE:
(504) 596-2355
FAX:
(504) 596-2356

LAKESIDE VILLAGE TOWNHOMES

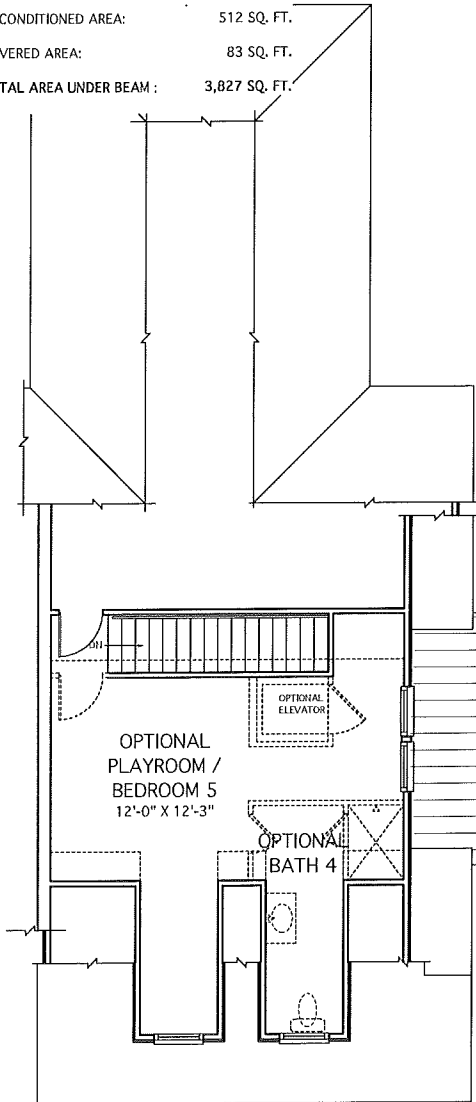
LOTS 5 - 9

MANDEVILLE, LA

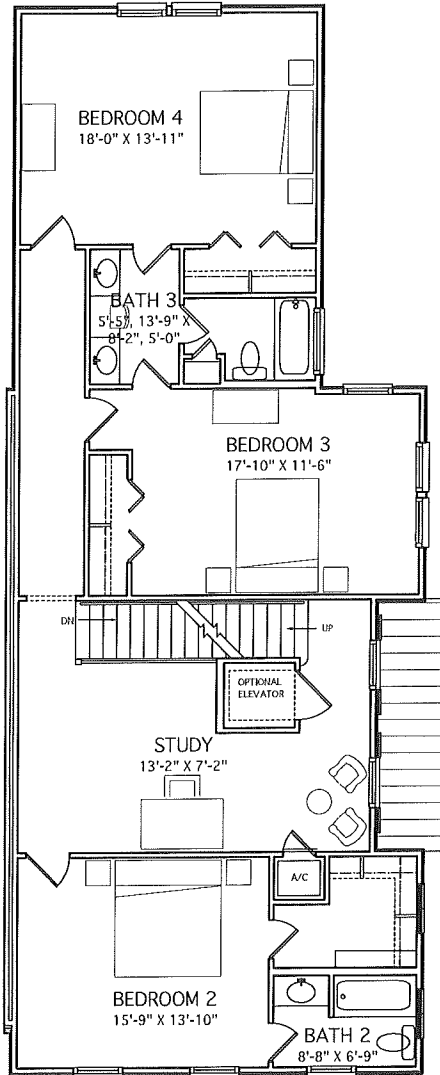
DATE: 05-27-05

AREA TABULATIONS

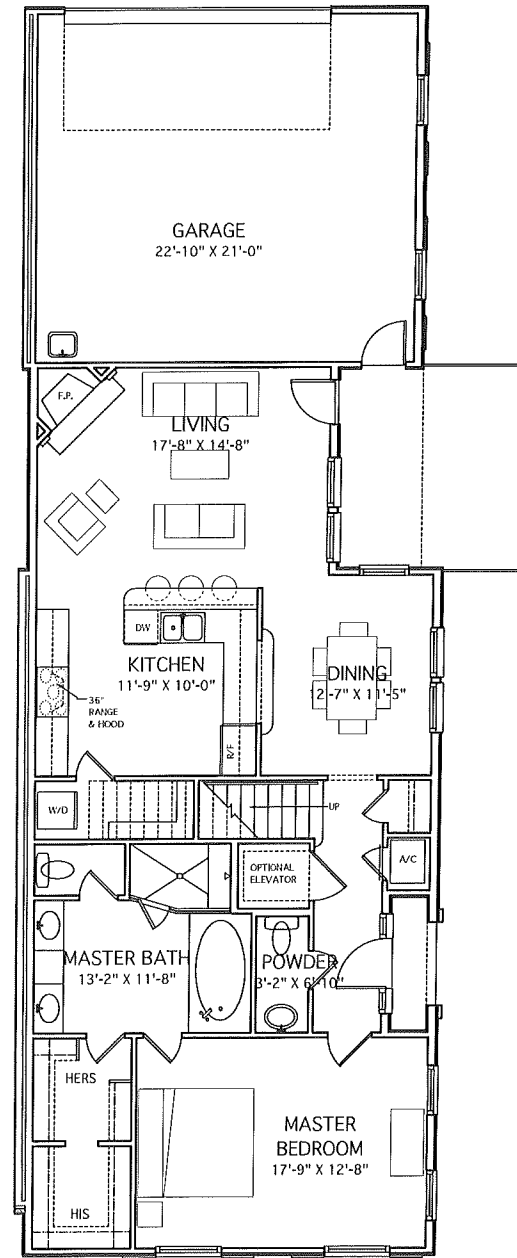
1217 RUE DEGAS (LOT #5 UNIT TYPE 'E'):
 CONDITIONED FIRST FLOOR: 1,248 SQ. FT.
 CONDITIONED SECOND FLOOR: 1,513 SQ. FT.
 TOTAL CONDITIONED AREA: 2,761 SQ. FT.
 OPTIONAL THIRD FLOOR: 471 SQ. FT.
 UNCONDITIONED AREA: 512 SQ. FT.
 COVERED AREA: 83 SQ. FT.
 TOTAL AREA UNDER BEAM : 3,827 SQ. FT.



THIRD FLOOR PLAN

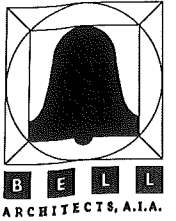


SECOND FLOOR PLAN



FIRST FLOOR PLAN

1217 RUE DEGAS (LOT #5)



144 GULF STREET
NEW ORLEANS
LOUISIANA
70113
PHONE:
(504) 885-2295
FAX:
(504) 885-2298

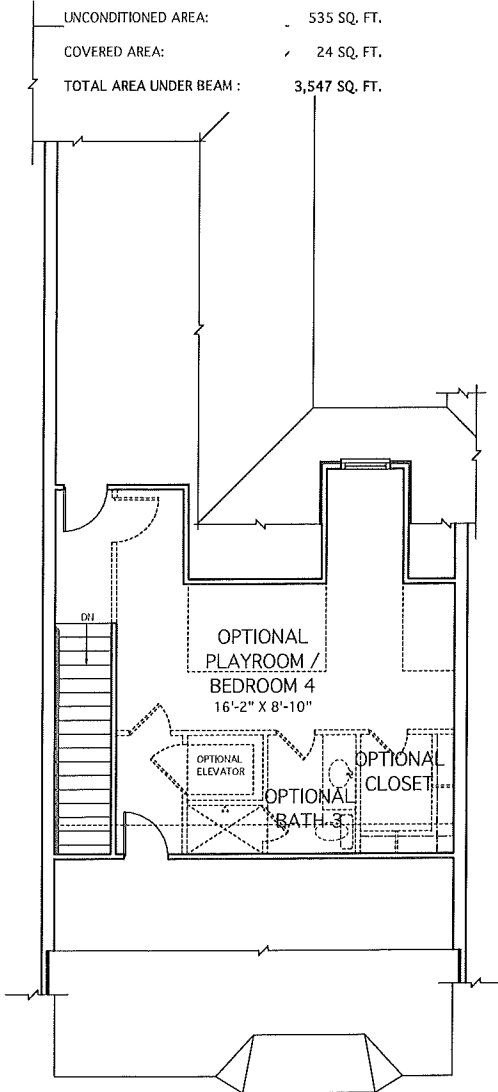
DATE: 06-24-05

LAKESIDE VILLAGE TOWNHOMES
 LOTS 5 - 9
 MANDEVILLE, LA

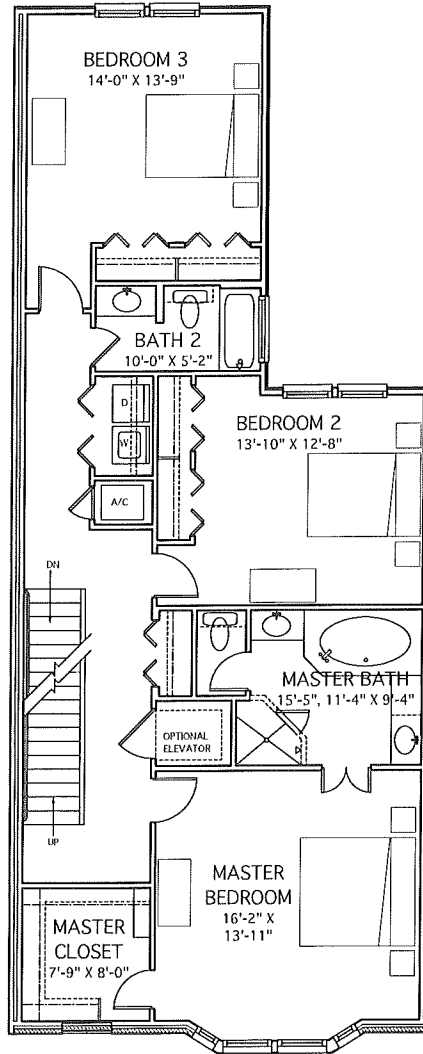
AREA TABULATIONS

1215 RUE DEGAS (LOT #6 UNIT TYPE 'C'):

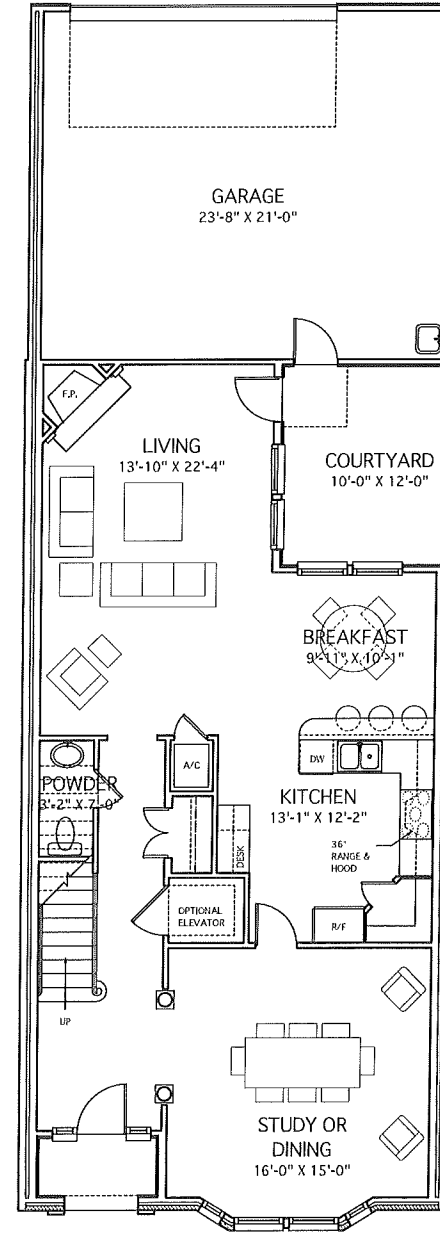
CONDITIONED FIRST FLOOR:	1,160 SQ. FT.
CONDITIONED SECOND FLOOR:	1,320 SQ. FT.
TOTAL CONDITIONED AREA:	2,480 SQ. FT.
OPTIONAL THIRD FLOOR:	508 SQ. FT.
UNCONDITIONED AREA:	535 SQ. FT.
COVERED AREA:	24 SQ. FT.
TOTAL AREA UNDER BEAM :	3,547 SQ. FT.



THIRD FLOOR PLAN

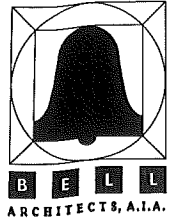


SECOND FLOOR PLAN



FIRST FLOOR PLAN

1215 RUE DEGAS (LOT #6)



111 OLIVE STREET
NEW ORLEANS
LOUISIANA
70115
PHONE:
(504) 581-2221
FAX:
(504) 581-2149

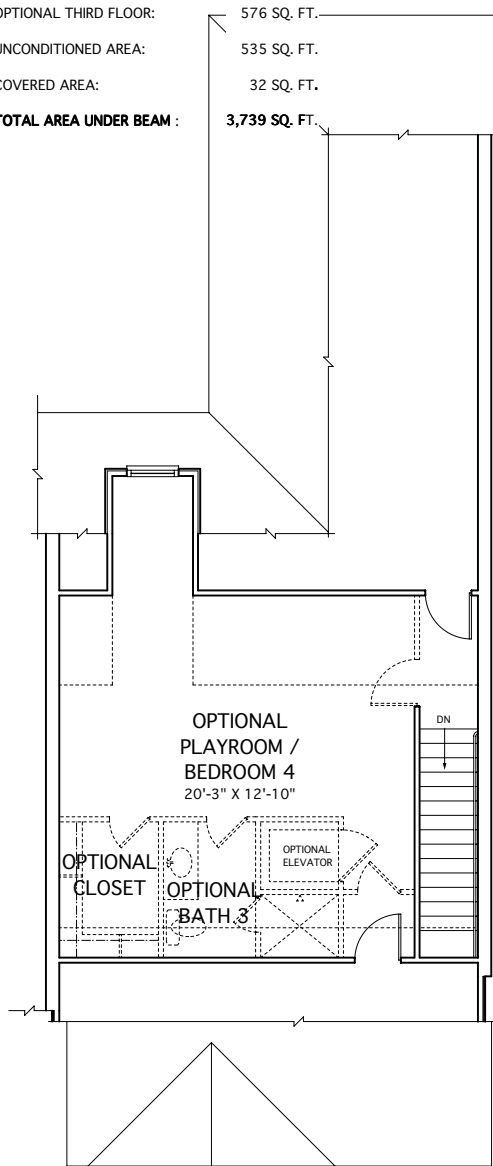
DATE: 06-24-05

LAKESIDE VILLAGE TOWNHOMES
LOTS 5 - 9
MANDEVILLE, LA

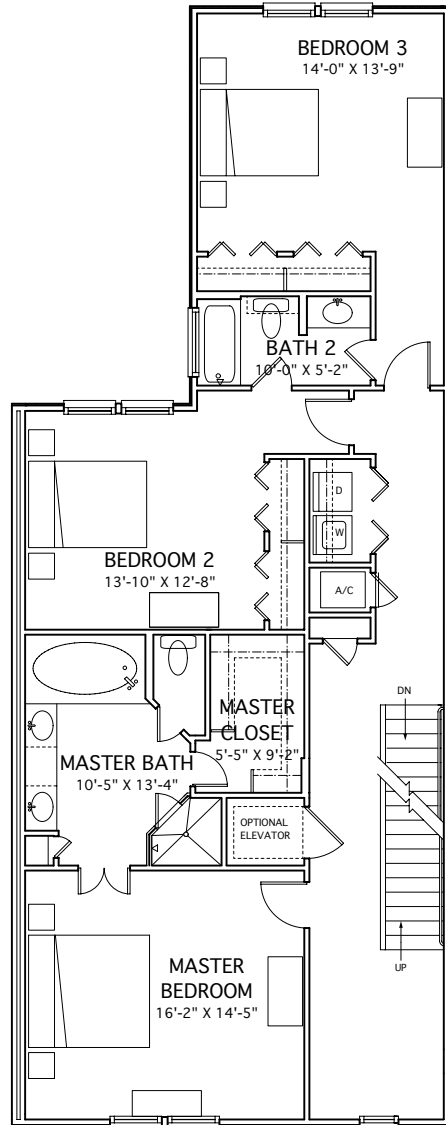
AREA TABULATIONS

1213 RUE DEGAS (LOT #7 UNIT TYPE 'B'):

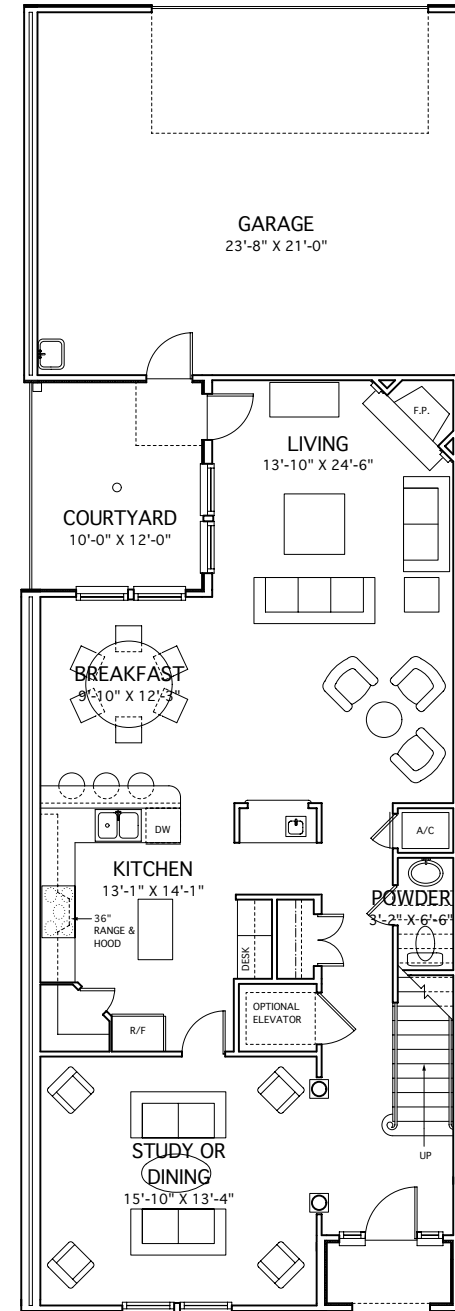
CONDITIONED FIRST FLOOR:	1,202 SQ. FT.
CONDITIONED SECOND FLOOR:	1,394 SQ. FT.
TOTAL CONDITIONED AREA:	2,596 SQ. FT.
OPTIONAL THIRD FLOOR:	576 SQ. FT.
UNCONDITIONED AREA:	535 SQ. FT.
COVERED AREA:	32 SQ. FT.
TOTAL AREA UNDER BEAM :	3,739 SQ. FT.



THIRD FLOOR PLAN

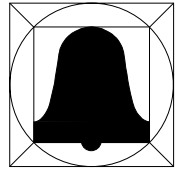


SECOND FLOOR PLAN



FIRST FLOOR PLAN

1213 RUE DEGAS (LOT #7)



B E L L
ARCHITECTS, A.I.A.

705 CAMP STREET
NEW ORLEANS
LOUISIANA
70110
PHONE:
(504) 584-2200
(504) 584-2202

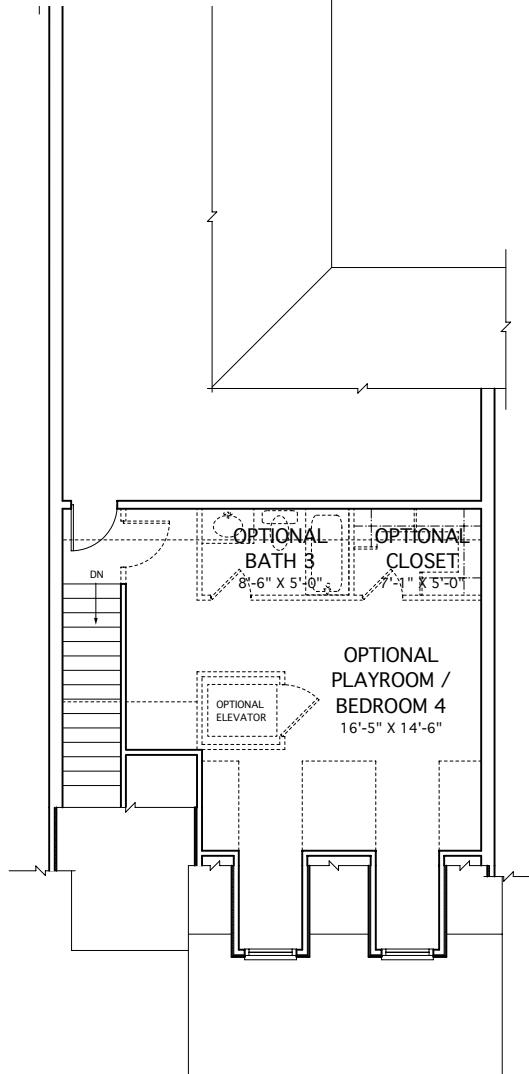
DATE: 06-24-05

LAKESIDE VILLAGE TOWNHOMES
LOTS 5 - 9
MANDEVILLE, LA

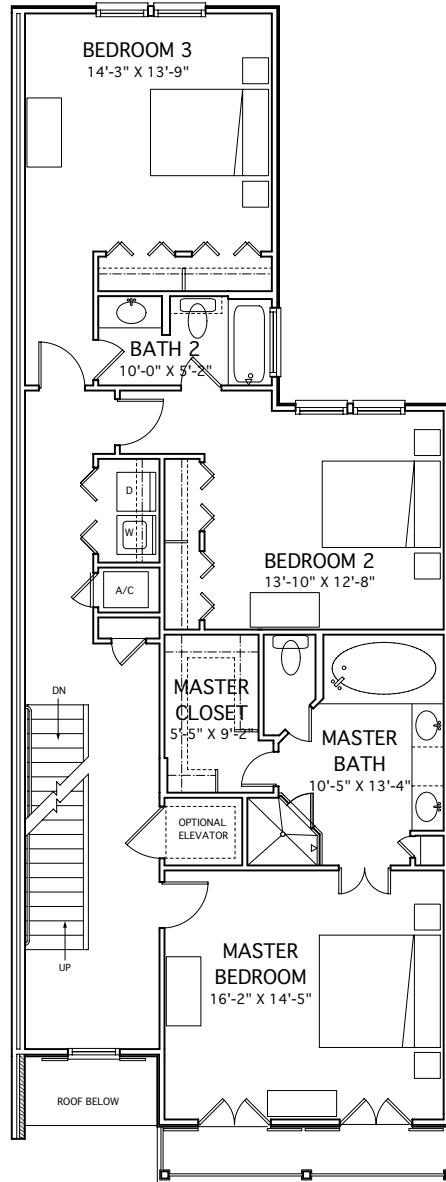
AREA TABULATIONS

1211 RUE DEGAS (LOT #8 UNIT TYPE 'B'):

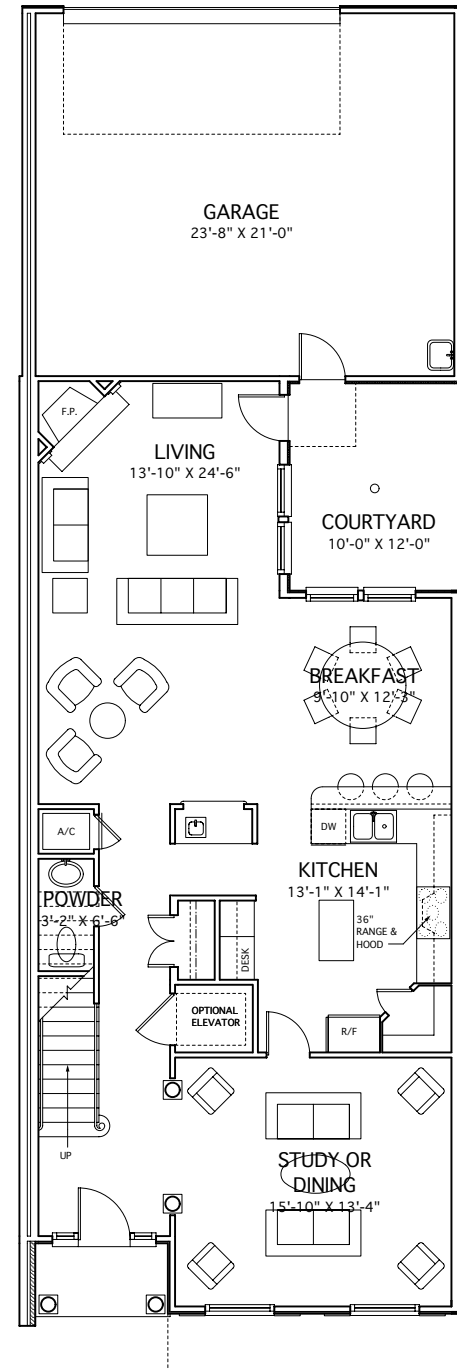
CONDITIONED FIRST FLOOR:	1,200 SQ. FT.
CONDITIONED SECOND FLOOR:	1,361 SQ. FT.
TOTAL CONDITIONED AREA:	2,561 SQ. FT.
OPTIONAL THIRD FLOOR:	517 SQ. FT.
UNCONDITIONED AREA:	535 SQ. FT.
COVERED AREA:	34 SQ. FT.
TOTAL AREA UNDER BEAM :	3,647 SQ. FT.



THIRD FLOOR PLAN

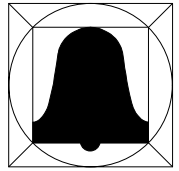


SECOND FLOOR PLAN



FIRST FLOOR PLAN

1211 RUE DEGAS (LOT #8)



B E L
ARCHITECTS, A.I.A.

705 CAMP STREET
NEW ORLEANS,
LOUISIANA
70112
PHONE:
(504) 596-2200
FAX:
(504) 596-2202

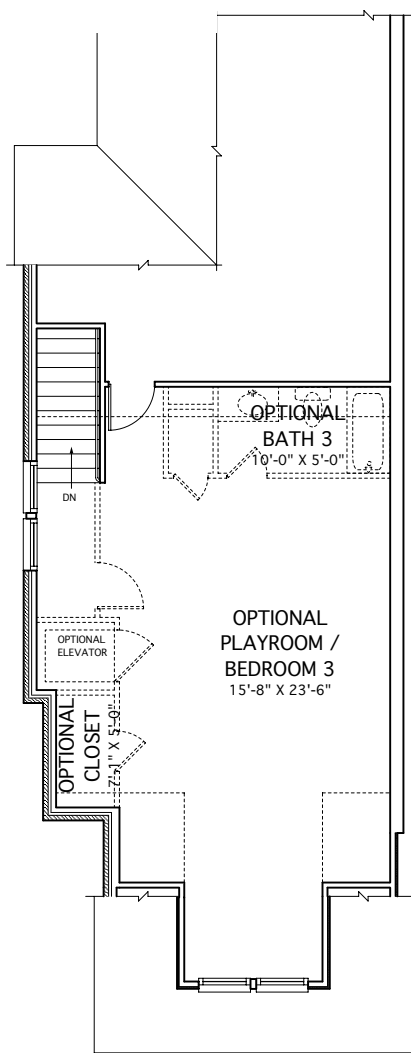
DATE: 06-24-05

LAKESIDE VILLAGE TOWNHOMES
LOTS 5 - 9
MANDEVILLE, LA

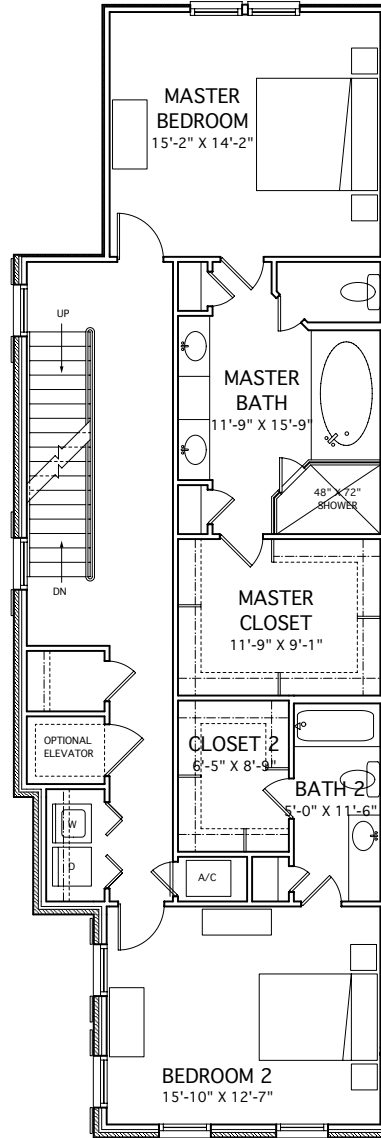
AREA TABULATIONS

1209 RUE DEGAS (LOT #9 UNIT TYPE 'F'):

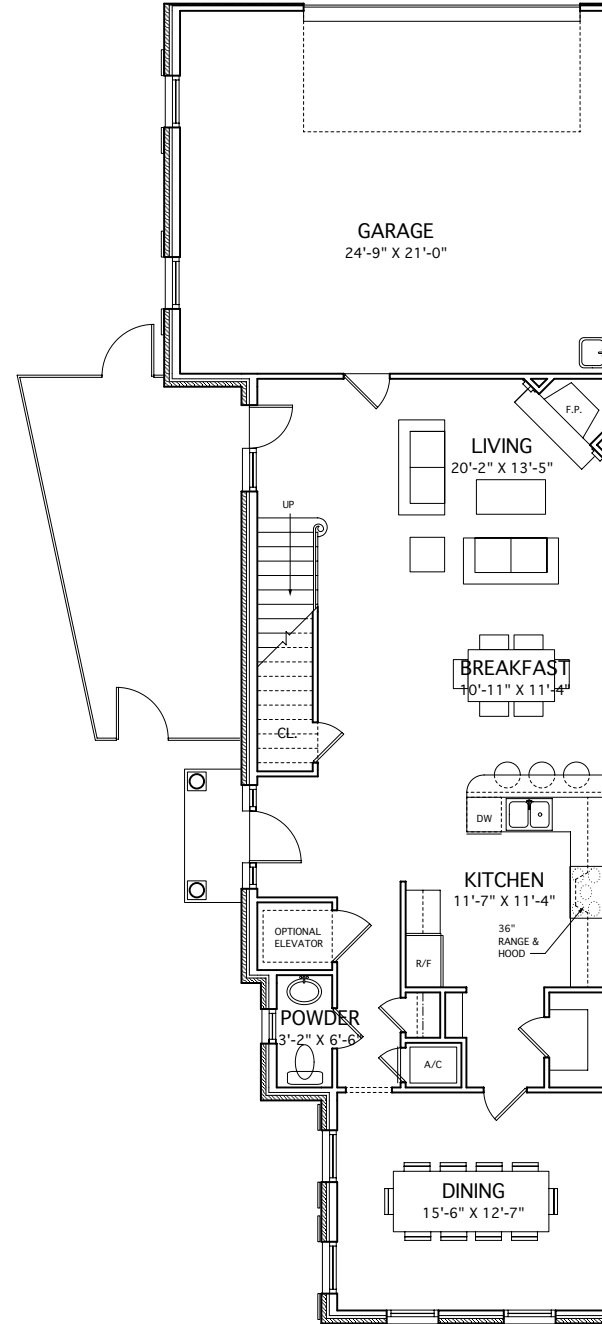
CONDITIONED FIRST FLOOR:	1,119 SQ. FT.
CONDITIONED SECOND FLOOR:	1,275 SQ. FT.
TOTAL CONDITIONED AREA:	2,394 SQ. FT.
OPTIONAL THIRD FLOOR:	672 SQ. FT.
UNCONDITIONED AREA:	561 SQ. FT.
COVERED AREA:	33 SQ. FT.
TOTAL AREA UNDER BEAM :	3,660 SQ. FT.



THIRD FLOOR PLAN

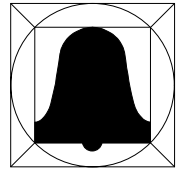


SECOND FLOOR PLAN



FIRST FLOOR PLAN

1209 RUE DEGAS (LOT #9)



B E L L
ARCHITECTS, A.I.A.

105 CAMP STREET
NEW ORLEANS
LOUISIANA
70112
PHONE:
(504) 596-2333
FAX:
(504) 596-2332

DATE: 06-24-05

LAKESIDE VILLAGE TOWNHOMES
LOTS 5 - 9
MANDEVILLE, LA