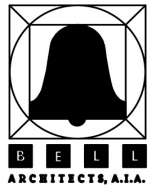


SITE PLAN



755 CAMP STREET
 NEW ORLEANS
 LOUISIANA
 70130

PHONE:
 (504) 596-2355
 FAX:
 (504) 596-2356

LAKESIDE VILLAGE TOWNHOMES

LOTS 10 - 13
 MANDEVILLE, LA

DATE: 01-14-05



LOT #13

LOT #12

LOT #11

LOT #10

FRONT ELEVATION



B E L L
ARCHITECTS, A.I.A.

755 CAMP STREET
NEW ORLEANS
LOUISIANA
70130

PHONE:
(504) 596-2355
FAX:
(504) 596-2356

LAKESIDE VILLAGE TOWNHOMES

LOTS 10 - 13
MANDEVILLE, LA

DATE: 01-14-05



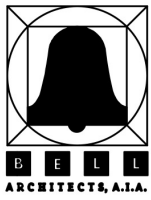
LOT #10

LOT #11

LOT #12

LOT #13

REAR ELEVATION



755 CAMP STREET
NEW ORLEANS
LOUISIANA
70130

PHONE:
(504) 596-2355
FAX:
(504) 596-2356

LAKESIDE VILLAGE TOWNHOMES

LOTS 10 - 13
MANDEVILLE, LA

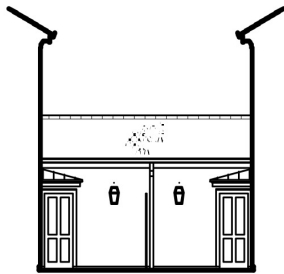
DATE: 01-14-05



TYPICAL SIDE ELEVATION @
COURTYARD



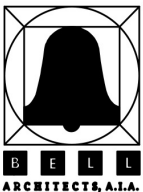
LOT #10 SIDE ELEVATION



TYPICAL FRONT ELEVATION @
COURTYARD



LOT #13 SIDE ELEVATION



755 CAMP STREET
NEW ORLEANS
LOUISIANA
70130

PHONE:
(504) 596-2355
FAX:
(504) 596-2356

LAKESIDE VILLAGE TOWNHOMES

LOTS 10 - 13
MANDEVILLE, LA

DATE: 06-24-05

AREA TABULATIONS

1207 RUE DEGAS (LOT #10):

CONDITIONED FIRST FLOOR: 1,290 SQ. FT.

CONDITIONED SECOND FLOOR: 1,470 SQ. FT.

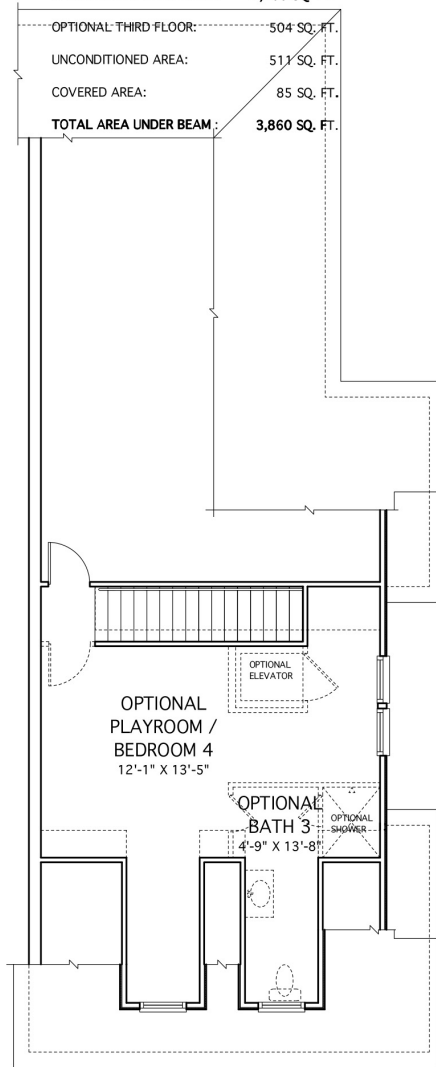
TOTAL CONDITIONED AREA: 2,760 SQ. FT.

OPTIONAL THIRD FLOOR: 504 SQ. FT.

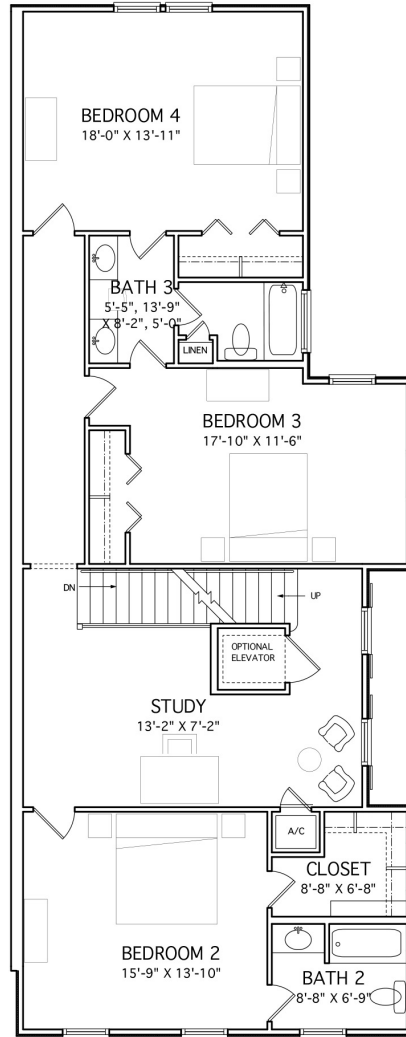
UNCONDITIONED AREA: 511 SQ. FT.

COVERED AREA: 85 SQ. FT.

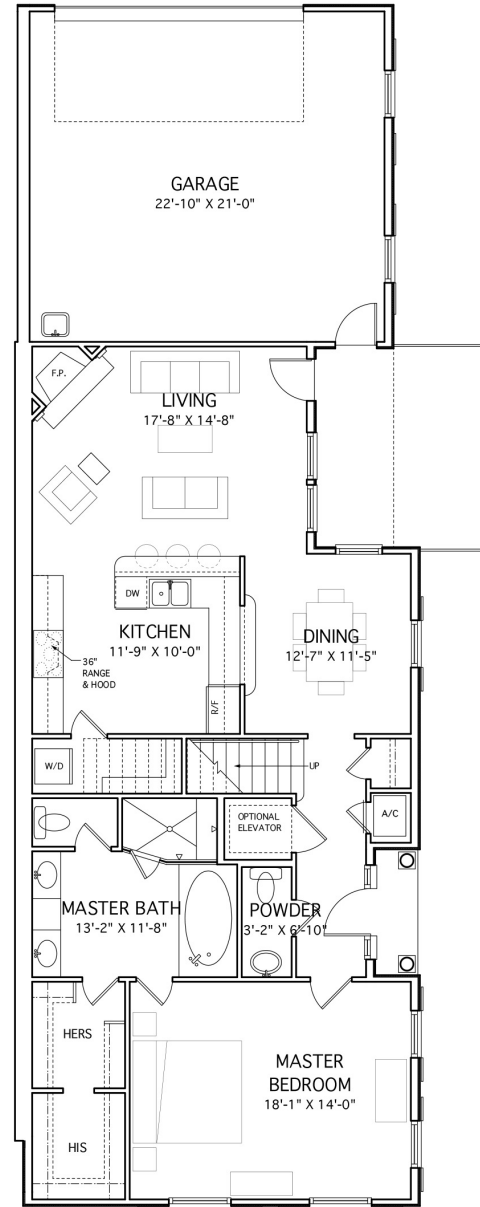
TOTAL AREA UNDER BEAM: 3,860 SQ. FT.



THIRD FLOOR PLAN



SECOND FLOOR PLAN



FIRST FLOOR PLAN

1207 RUE DEGAS (LOT #10)



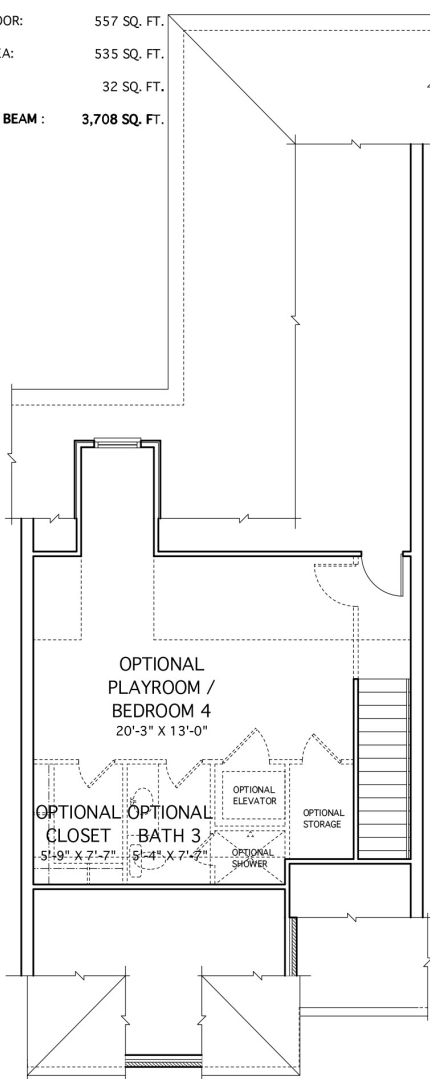
DATE: 06-24-05

LAKESIDE VILLAGE TOWNHOMES
LOTS 10 - 13
MANDEVILLE, LA

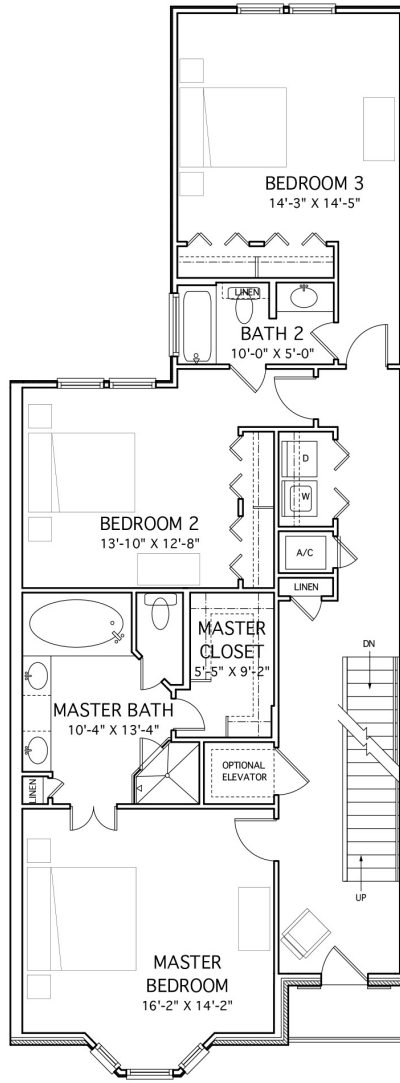
AREA TABULATIONS

1205 RUE DEGAS (LOT #11):

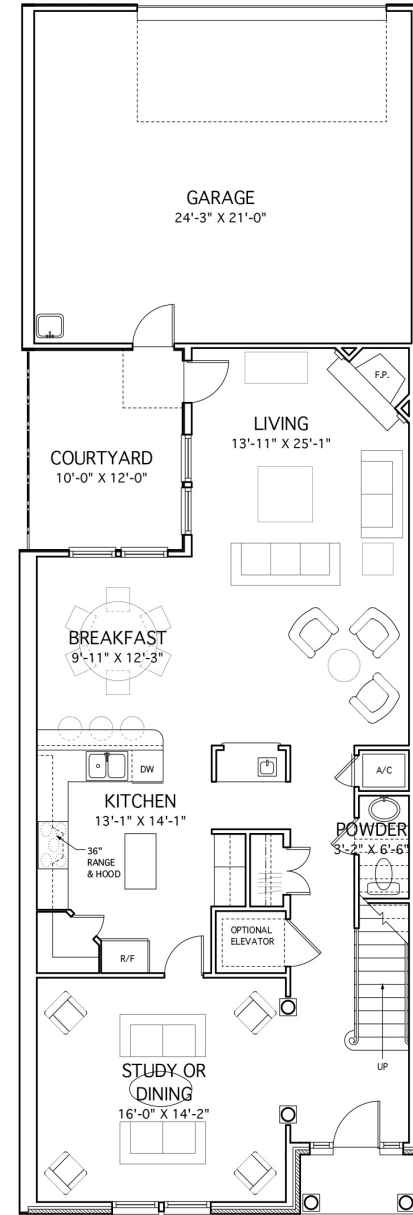
CONDITIONED FIRST FLOOR:	1,211 SQ. FT.
CONDITIONED SECOND FLOOR:	1,375 SQ. FT.
TOTAL CONDITIONED AREA:	2,584 SQ. FT.
OPTIONAL THIRD FLOOR:	557 SQ. FT.
UNCONDITIONED AREA:	535 SQ. FT.
COVERED AREA:	32 SQ. FT.
TOTAL AREA UNDER BEAM :	3,708 SQ. FT.



THIRD FLOOR PLAN

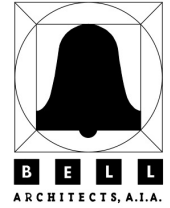


SECOND FLOOR PLAN



FIRST FLOOR PLAN

1205 RUE DEGAS (LOT #11)



1100 OLIVE STREET
NEW ORLEANS,
LOUISIANA 70116
PHONE: (504) 584-2244
FAX: (504) 584-2244

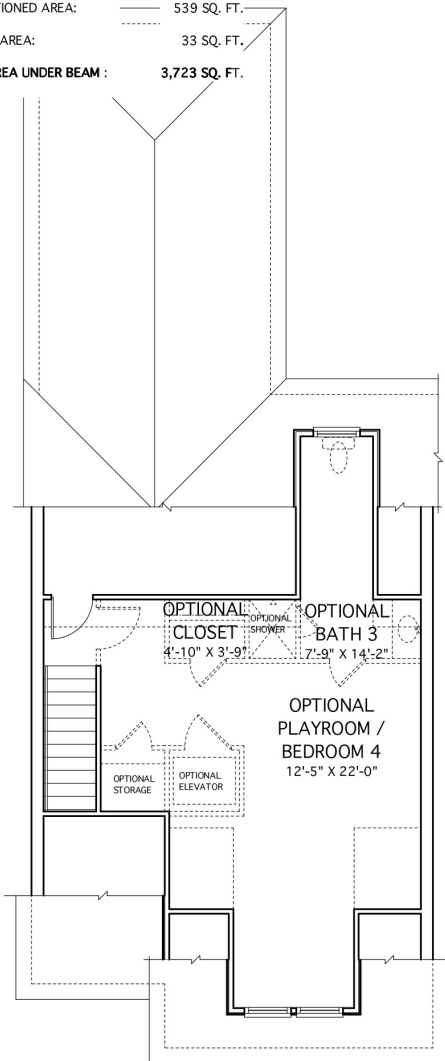
DATE: 06-24-05

LAKESIDE VILLAGE TOWNHOMES
LOTS 10 - 13
MANDEVILLE, LA

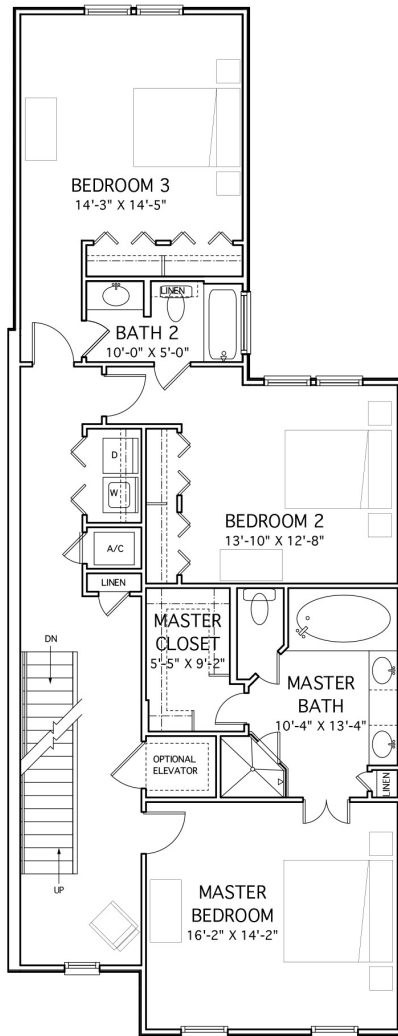
AREA TABULATIONS

1203 RUE DEGAS (LOT #12):

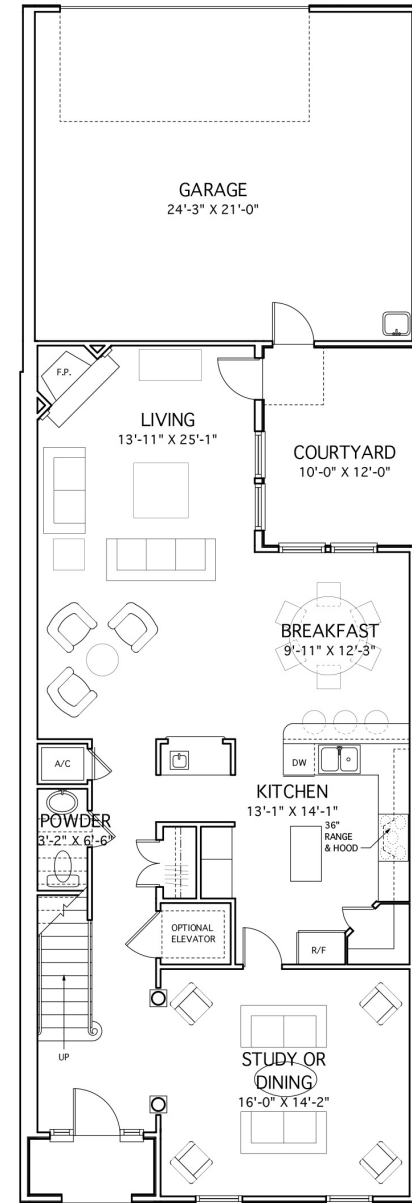
CONDITIONED FIRST FLOOR:	1,211 SQ. FT.
CONDITIONED SECOND FLOOR:	1,372 SQ. FT.
TOTAL CONDITIONED AREA:	2,583 SQ. FT.
OPTIONAL THIRD FLOOR:	568 SQ.FT.
UNCONDITIONED AREA:	539 SQ. FT.
COVERED AREA:	33 SQ. FT.
TOTAL AREA UNDER BEAM :	3,723 SQ. FT.



THIRD FLOOR PLAN

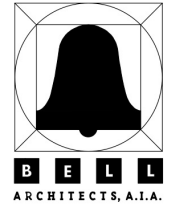


SECOND FLOOR PLAN



FIRST FLOOR PLAN

1203 RUE DEGAS (LOT #12)



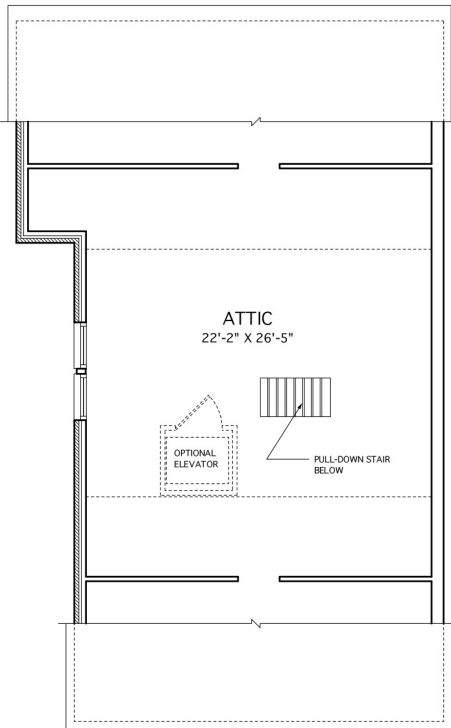
DATE: 6-24-05

LAKESIDE VILLAGE TOWNHOMES
 LOTS 10 - 13
 MANDEVILLE, LA

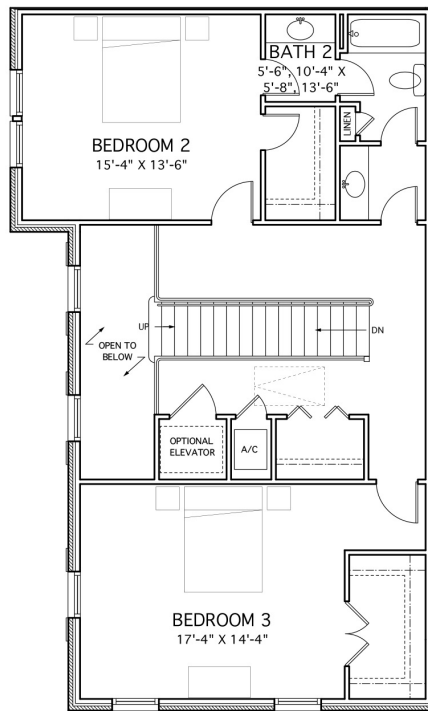
AREA TABULATIONS

1201 RUE DEGAS (LOT #13):

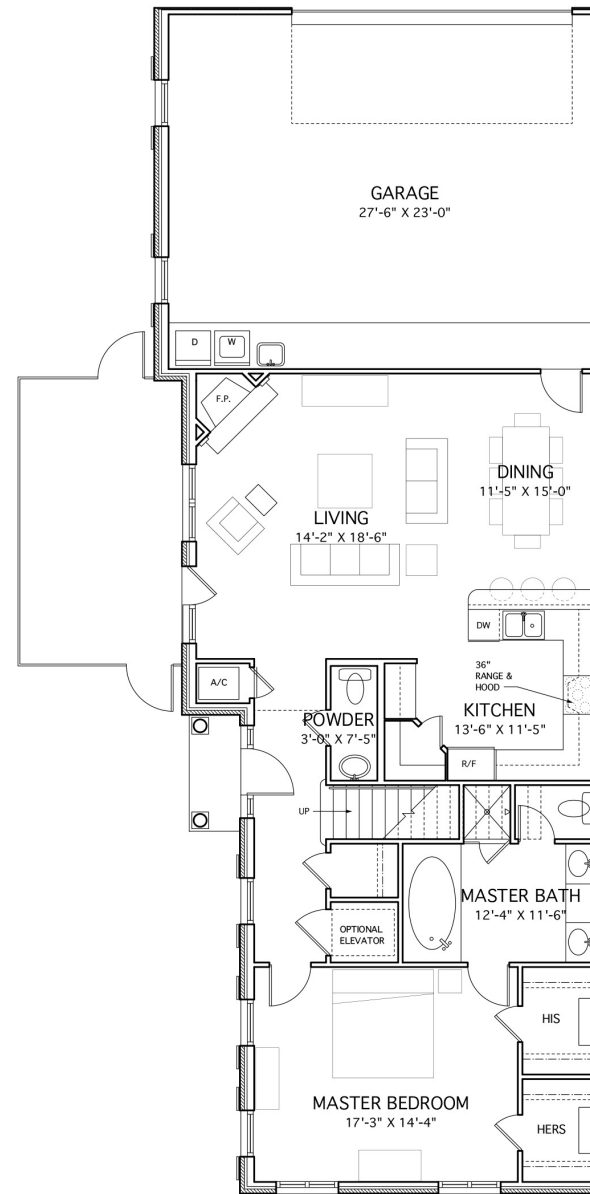
CONDITIONED FIRST FLOOR:	1,324 SQ. FT.
CONDITIONED SECOND FLOOR:	1,114 SQ. FT.
TOTAL CONDITIONED AREA:	2,438 SQ. FT.
UNCONDITIONED AREA:	663 SQ. FT.
COVERED AREA:	25 SQ. FT.
TOTAL AREA UNDER BEAM :	3,126 SQ. FT.



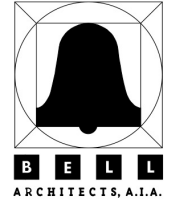
THIRD FLOOR PLAN



SECOND FLOOR PLAN



FIRST FLOOR PLAN



DATE: 06-24-05

LAKESIDE VILLAGE TOWNHOMES
LOTS 10 - 13
MANDEVILLE, LA

1201 RUE DEGAS (LOT #13)